

KS1 Priority Therapy: Y2 Maths

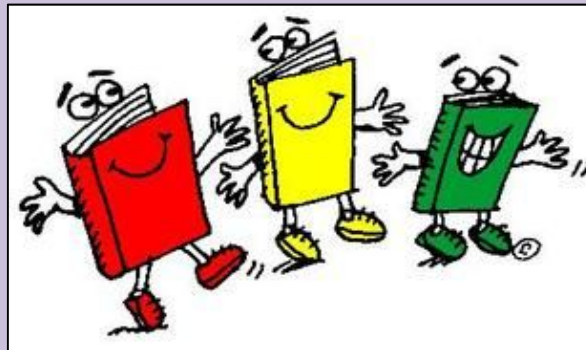
Commissioned by The PiXL Club Ltd.
February 2018

This resource is strictly for the use of The PiXL Club Ltd member schools during the life of the membership only. It may NOT be copied, sold, or transferred or made available by whatever means to a third party non-member during or after membership. Until such time it may be freely used within the PiXL member school by their teachers and authorized staff and any other use or sale thereof is strictly prohibited.

All opinions and contributions are those of the authors. The contents of this resource are not connected with, or endorsed by, any other company, organisation or institution. Images from getty.co.uk unless otherwise stated.

PiXL Club Ltd endeavour to trace and contact copyright owners. If there are any inadvertent omissions or errors in the acknowledgements or usage, this is unintended and PiXL will remedy these on written notification.

M4f. Can find $\frac{1}{4}$ of a shape or set of objects



= Teacher Notes

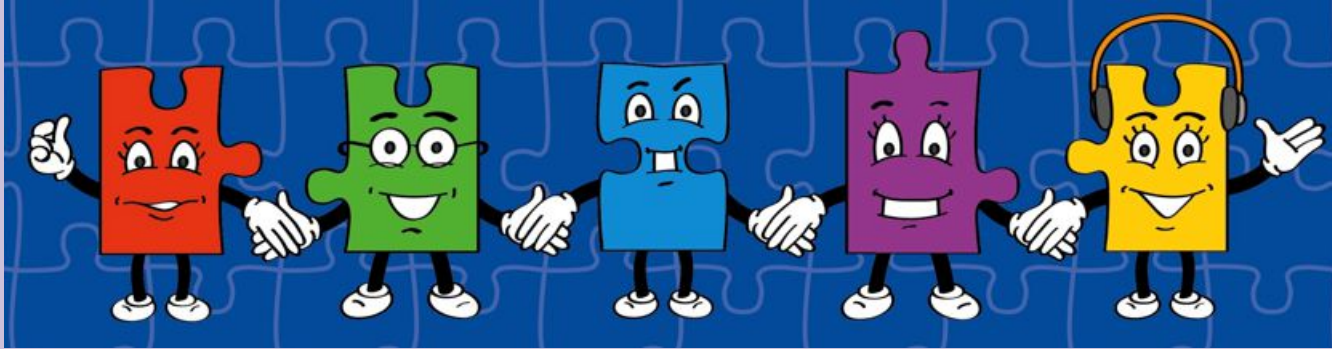


Teacher Information

This resource should be used to support Key Marginal pupils for whom you have completed a PLC. It is designed to be delivered as a teaching activity to a small group or individual in order to fill a gap in their understanding. There is no expectation to use the PowerPoint in its entirety. Choose the methods and resources that suit your school's approach to place value, counting and calculation.

Use of this resource should form part of normal, day-to-day teaching, as you would do with a guided teaching group. This teaching resource is based on the National Curriculum expectations for Key Stage 1, with a focus on the laser-sharp statements from the PiXL PLC.

LORIC

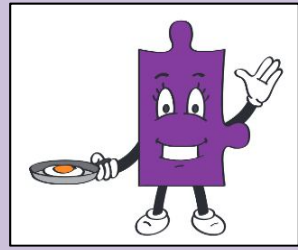


Our Primary Edge attributes help us to become better learners and today is no exception. Before you start this activity, here are some ideas for how you will need your Izzy Initiative skills today:

- Make suggestions.
- Volunteer.
- Challenge yourself.

Command Words:
Volunteer Create
Research Develop
Set up Suggest
Enter

Developing Initiative Skills



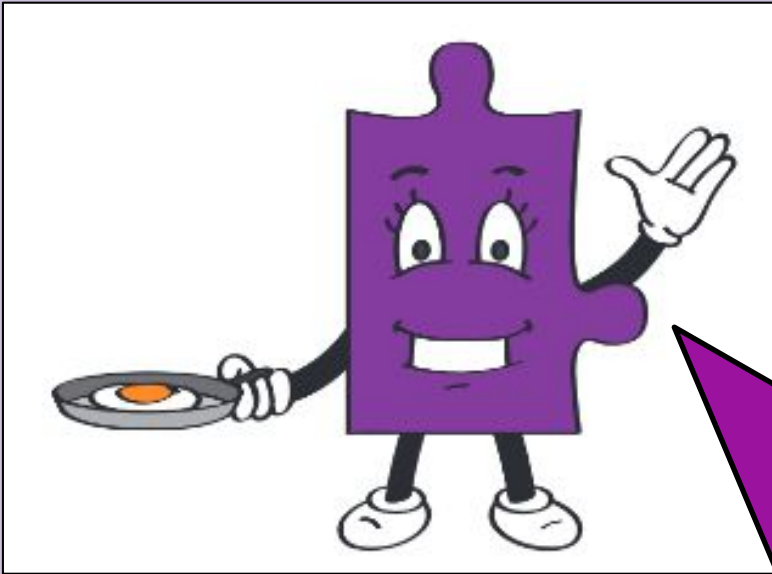
Use this activity to help children develop their initiative skills before you begin the therapy.

Give the children a large bucket/object and explain that the group must all be touching the bucket/object at once. After they all put a hand on the bucket explain that now they all must be touching the bucket/object at once, with their... (finger, toe, knee, elbow, shoulder...). As a final challenge ask the group to transport the bucket/object to a different area of the classroom whilst still touching the bucket/object.

Did you develop different ways to move the bucket/object to make improvements?

Did you make any suggestions?

What I Will Be Looking For Today



You will have lots of chances to demonstrate your initiative skills today. Here's what I'll be looking for:

- Trying to work it out before asking for help.
- Making suggestions about how to complete the tasks.
 - Challenging yourself.

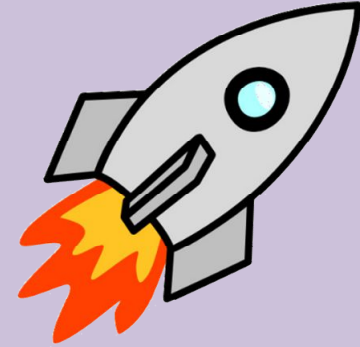


Teacher Information

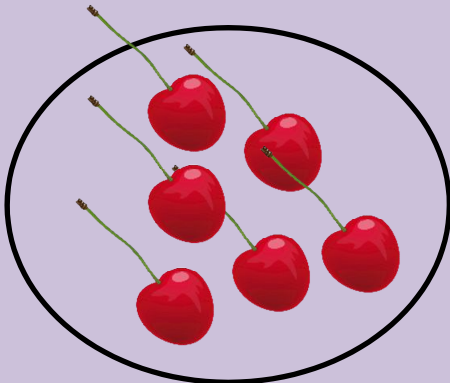
Whilst pictures are provided throughout the therapy to practise the skill the following resources would be useful: counters, multilink cubes, counting sticks, coins or any classroom objects that can be used for quartering.

What is a Whole?

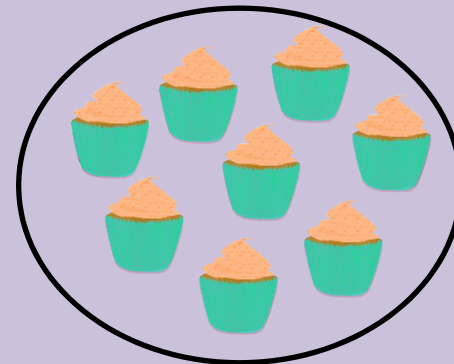
A whole is a thing that is complete in itself.



This is a whole football, house and rocket. A whole can also be a set of objects.



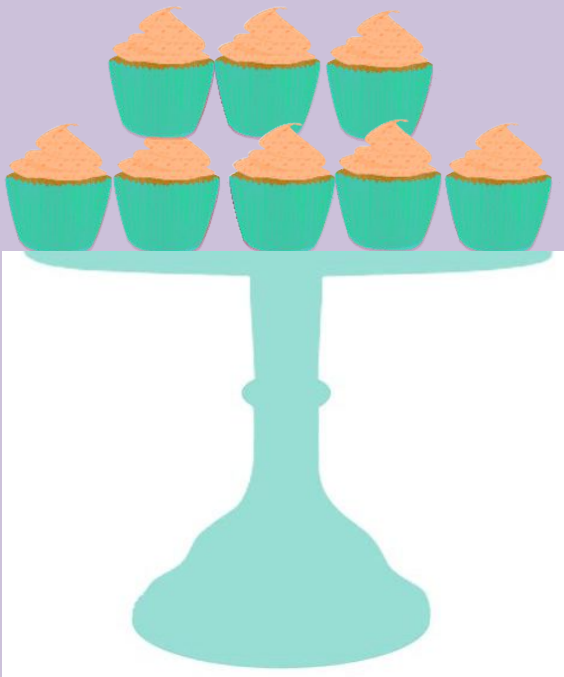
These 6
cherries
are the
whole.



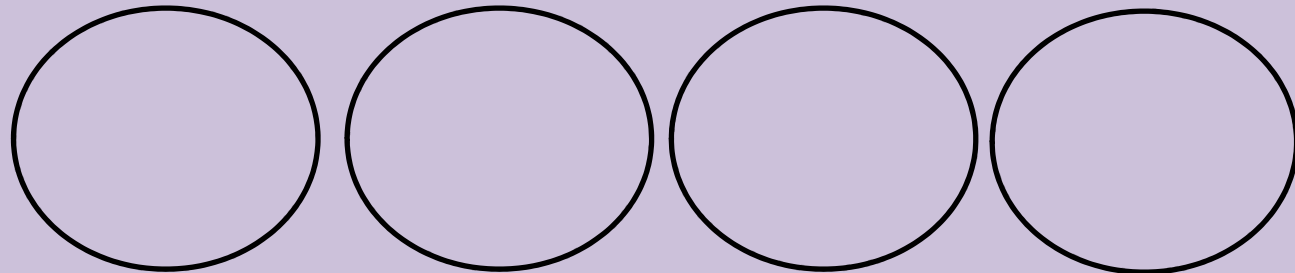
These 8
cupcakes
are the
whole.

Quartering Objects

A quarter is one of four **equal** parts of a whole. It is like sharing between four. Each person must get the same amount.



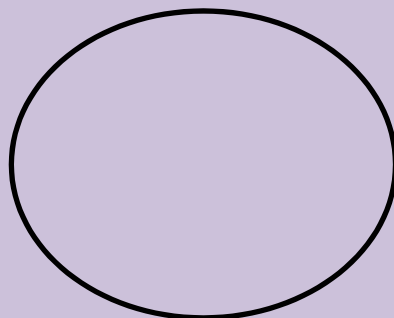
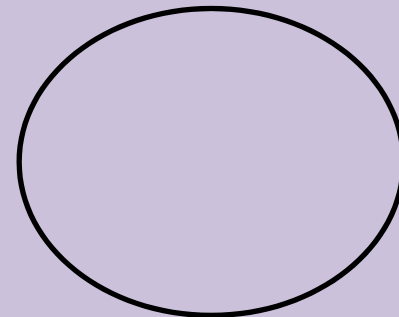
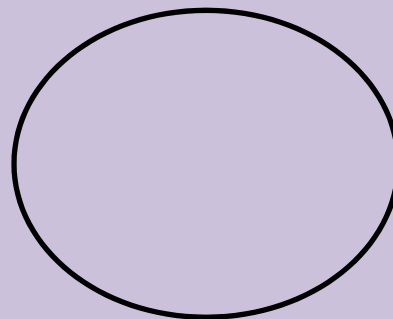
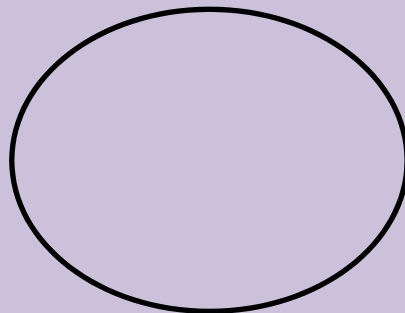
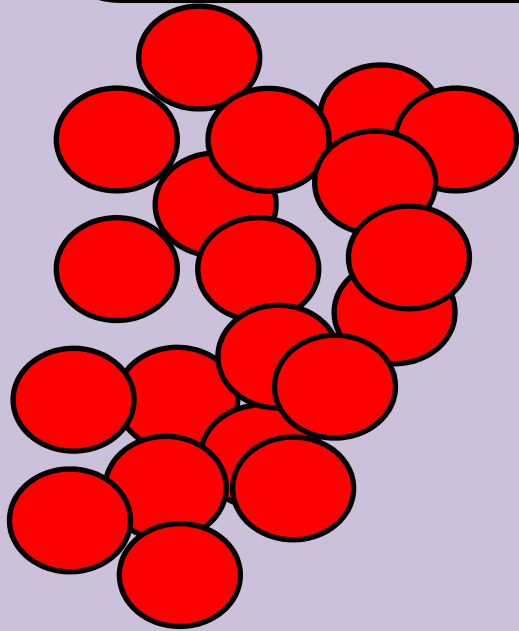
To find a quarter of these 8 cupcakes I need to share them equally between four. Draw four circles on your whiteboard. Put a cupcake in each circle, one at a time, until they run out.



$$\text{Quarter of } 8 = 2$$

Quartering Objects

When we quarter a set of objects we are splitting the objects into four **equal** piles. Draw four circles on your whiteboard to move the objects into them one at a time. When you have shared out the objects check each pile has the same amount. Let's find a quarter of 20 counters.



Quarter of 20 = 5

Practise

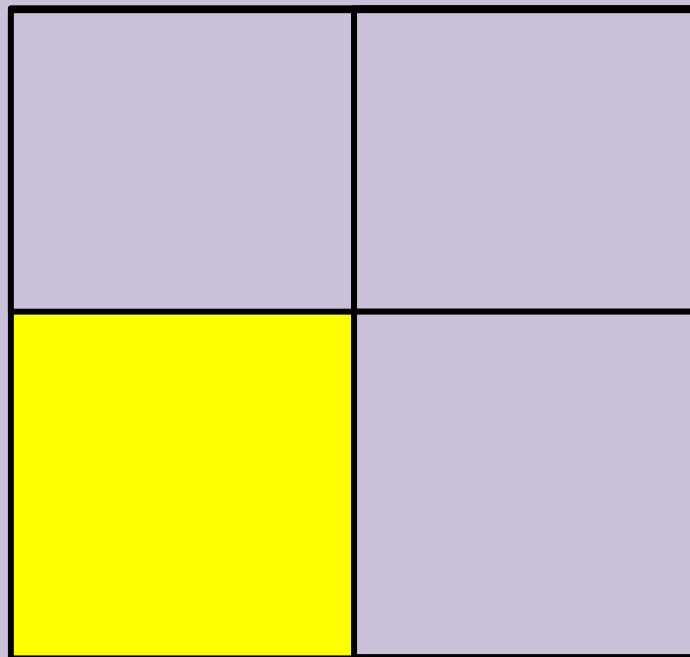
★ Provide children with several groups of objects (divisible by 4) from around the classroom and ask them to find a quarter.



Did you check that each of the four parts are equal?

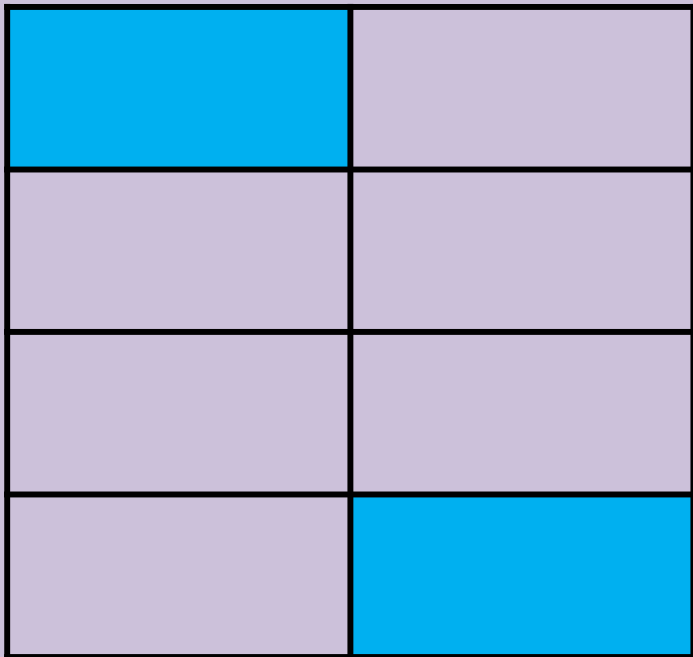
Finding a Quarter of a Shape

We know that a quarter is one of four **equal** parts. Looking at the square below we can see that there are four parts and each part is the same size. We can therefore say the shaded part is a quarter of the shape.



Finding a Quarter of a Shape

Let's look at the same square. This time there are more than four parts. To check whether a quarter is shaded we need to follow three steps.

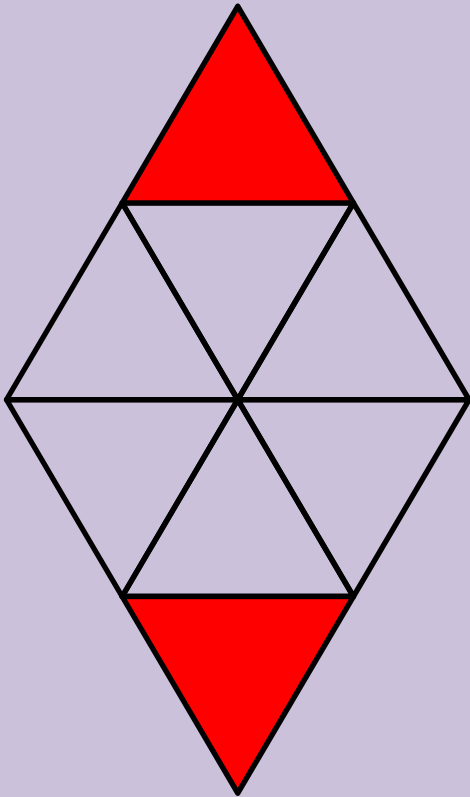


1. Check all the parts are equal in size.
2. Count how many parts the shape is divided into (8).
3. Get that number (8) of objects and quarter them.

If a quarter (2) is the same as the number of parts shaded you have proved a quarter of the shape is shaded.

Practise

Is a quarter of this shape shaded? Follow the three steps.

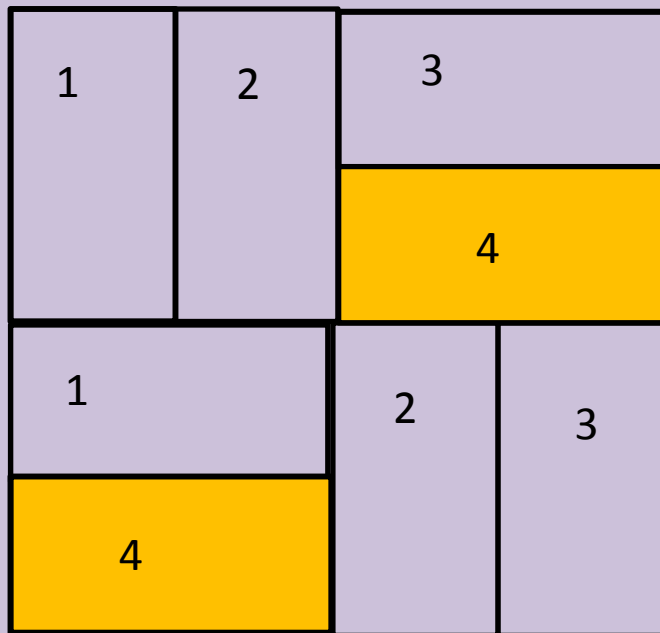


1. Check all the parts are equal in size.
2. Count how many parts the shape is divided into.
3. Get that number of objects and quarter them.

If a quarter is the same as the number of parts shaded you have proved a quarter of the shape is shaded.

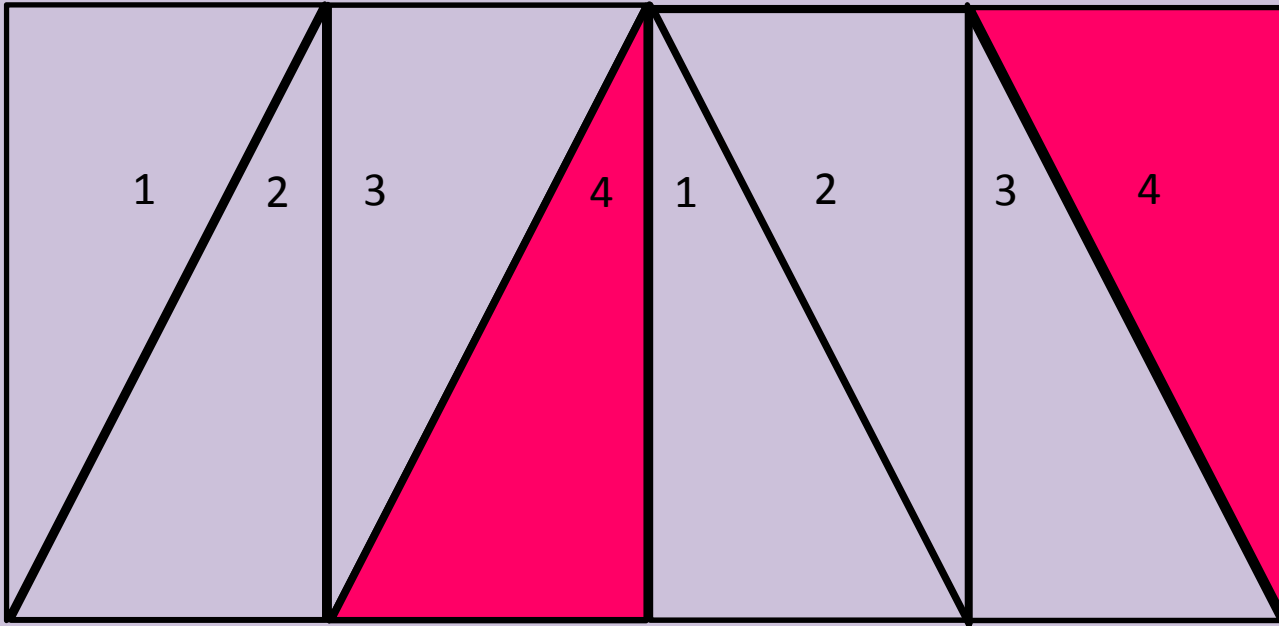
Finding a Quarter of a Shape

To shade a quarter of a shape you first need to check each part is the same size. Then number each part 1,2,3,4. When you get to 4 start at 1 again. Then shade all the parts that have a number 4 in them. You have now shaded a quarter of this shape.



Practise

Try this more challenging shape.





Show Me Tasks

Once the therapy has been delivered you can use Show Me Tasks to demonstrate that the skill is now secure. They are not intended to be completed all at once and ideally should be done in intervals of a few days after the therapy has been delivered. The challenge in the tasks is progressive.

Show Me Tasks

M4f. Can find $\frac{1}{4}$ of a shape or set of objects

Commissioned by The PiXL Club Ltd.
February 2018

This resource is strictly for the use of member schools for as long as they remain members of The PiXL Club. It may not be copied, sold nor transferred to a third party or used by the school after membership ceases. Until such time it may be freely used within the member school. All opinions and contributions are those of the authors. The contents of this resource are not connected with nor endorsed by any other company, organisation or institution.

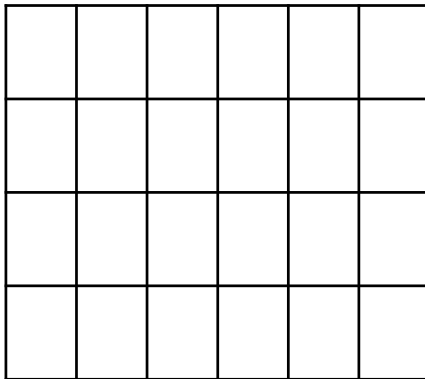
© Copyright The PiXL Club Limited, 2018

Show how you can find a quarter of a set of objects.



Give child a group of objects divisible by 4.

Shade a quarter of this shape.



How did you know how many squares to colour?

Tick the shapes that have a quarter shaded. Explain your reasoning.

